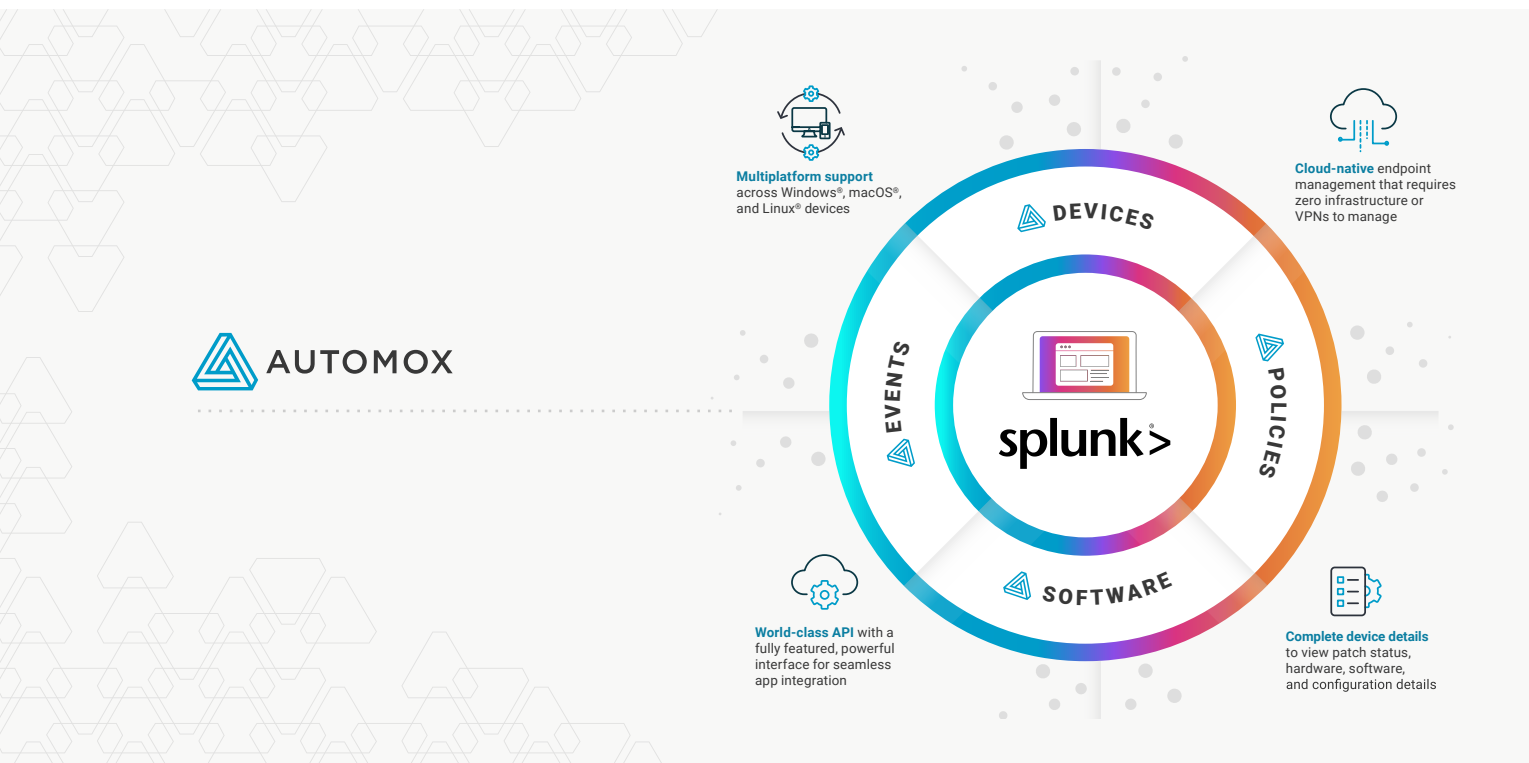


## SOLUTION BRIEF

# Splunk and Automox

## Get a single source of truth for faster data-driven decisions



### SOLVING THE DATA VISIBILITY CHALLENGE

Detailed IT asset and event reporting is critical for making accurate and real-time decisions when it comes to managing, securing, and triaging your IT environment. The influx of remote workers has made it harder to maintain a comprehensive view across increasingly distributed workforces, overwhelming IT and security teams alike. To drive better insights across both your IT and security infrastructure, you need complete event, software, and device information in a single holistic view.

### SINGLE PANE OF VISIBILITY

Security information and event management (SIEM) tools like Splunk have become staples in the enterprise cyber resilience stack. Automox® device data can be pulled into the Splunk® Enterprise and Splunk Cloud platforms to drive further data insights. With this integration, IT-related events, endpoint policies, and details can now be centralized into a single pane of visibility.

With tactical data at your fingertips, you'll make quicker decisions that keep your cyber adversaries at bay and your business moving forward.

### KEY BENEFITS

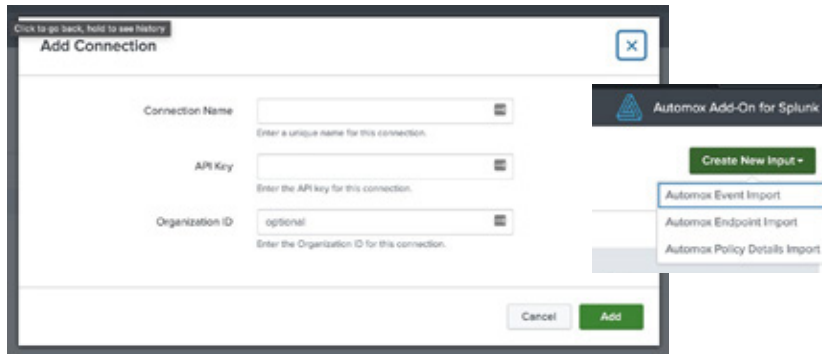
- **Faster data-driven decisions**  
Triage events faster with access to merged contextual data with Splunk data sources.
- **Cross-team visibility**  
View a single source of truth for quick operational and security decisions.
- **Customizable alerts, reports, and visualizations**  
Uncover device patterns and trends with enriched data insights and viewing capabilities.

## HOW IT WORKS

Simply install the two Automox apps from Splunkbase to begin integrating data within Splunk.

### 1 // The Automox Technology Add-On for Splunk

Add a connection using the API key from the Automox platform to extract, transform, and load (ETL) Automox data within your Splunk Enterprise or Splunk Cloud environment with endpoint details, policy details, and Automox console events.



## GET THE INTEGRATION

To enable Automox within the Splunk console:

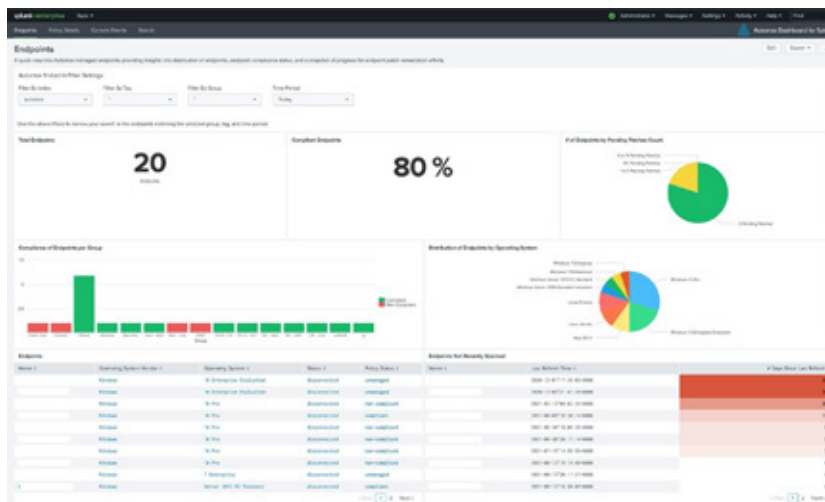
- Install the Automox Technology Add-On for Splunk [here](#)
- Install the Automox Dashboard for Splunk [here](#)

## BETTER DATA-DRIVEN DECISIONS

Stop guessing at which devices require attention – or worse, cross-referencing separate reporting tools, draining your time and giving adversaries the opportunity to expose outstanding vulnerabilities. With Automox and Splunk, you're better informed and more secure with a single source of truth for faster data-driven decisions.

### 2 // The Automox Dashboard for Splunk

The integration of Automox data within the Splunk platform enables a curation of views that can be customized and expanded upon in this dashboard.



The endpoints dashboard reports on successful patches by endpoint and grouping, pending patches, endpoints not recently scanned, and operating system (OS) distribution percentages.